



Gold and Precious Metals Limited

February 29, 2024

Shares

Ticker	ASA
Net assets	\$311 million
NAV	\$16.13
Share price	\$13.40
Discount	16.92%

Management

Adviser	Merk Investments
Portfolio Managers	Peter Maletis James Holman
CIO	Axel Merk

Contact

ASA Gold & Precious Metals Limited c/o Apex Fund Services 3 Canal Plaza, Suite 600 Portland, Maine 04101	
Website	www.asaltd.com
Toll-free	(800)432-3378

Dividends

Distributions	Semi-annual
11/22/23	\$.01
05/18/23	\$.01
11/23/22	\$.01
05/19/22	\$.01

Statistics

Beta ¹	0.88
R-squared ²	0.76

¹ Source: Bloomberg. Beta measures the Company's market-related risk over a three-year period relative to its benchmark, the NYSE Arca Gold Miners Total Return Index. A beta lower than 1 indicates historically lower volatility than the index; greater than 1 indicates higher volatility.

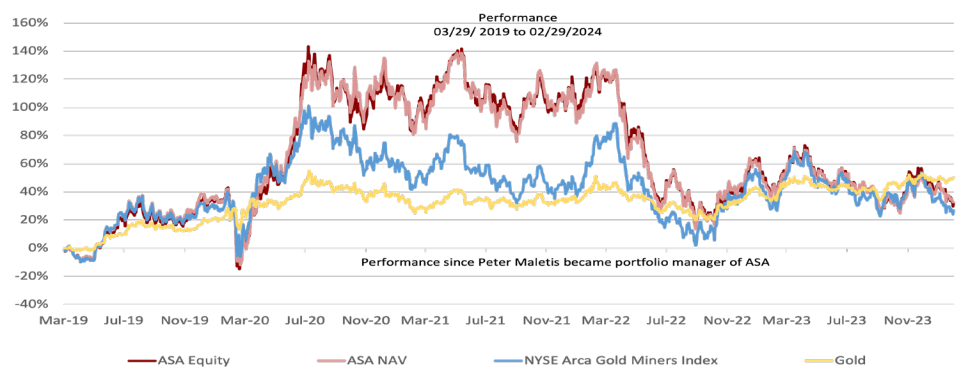
² Source: Bloomberg. R-squared is a measure of the percentage of a company's share price movement that can be attributed to its benchmark index. It can range from 0 and 1; 1 indicates a perfect correlation.

Established in 1958, ASA Gold and Precious Metals Limited is a closed-end precious metals and mining fund (NYSE: ASA) registered with the United States Securities and Exchange Commission and domiciled in Bermuda. The Company is one of the oldest investment management firms focused on the precious metals and mining industry. ASA employs bottom-up fundamental analysis and relies on detailed primary research including meetings with company executives, site visits to key operating assets, and proprietary financial analysis in making its investment decisions.

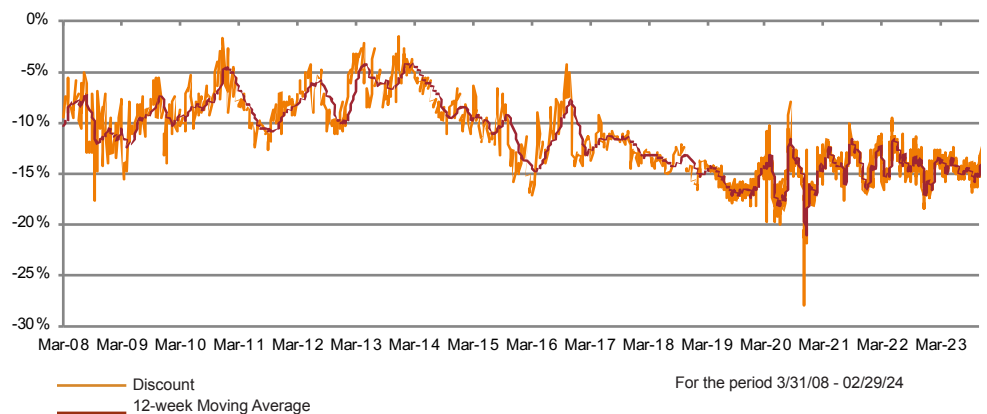
PERFORMANCE AS OF FEBRUARY 29, 2024

	Average Annual Total Returns					
	1 Year	3 Years	5 Years	10 Years	15 Years	Inception
NAV	-3.9%	-10.3%	6.6%	0.9%	0.0%	7.6%
Share Price	-6.9%	-10.6%	5.8%	-0.5%	-0.7%	7.4%

Includes the reinvestment of dividends. Inception is from December 11, 1958, the date on which the Company's shares were listed for trading on the NYSE.



HISTORICAL DISCOUNT



All performance information reflects past performance and is presented on a total return basis. Past performance is no guarantee of future results. Current performance may differ from that shown. The Company concentrates in the gold and precious minerals sector. This sector may be more volatile than other industries and may be affected by movements in commodity prices triggered by international monetary and political developments. The Company is a non-diversified fund and, as such, may invest in fewer investments. ASA Gold and Precious Metals Limited may invest in smaller-sized companies that may be more volatile and less liquid than larger, more-established companies. Investments in foreign securities, especially those in the emerging markets, may involve increased risk as well as exposure to currency fluctuations. Shares of closed-end funds frequently trade at a discount. This document may contain statements regarding plans and expectations for the future that constitute forward-looking statements within the Private Securities Litigation Reform Act of 1995. By their nature, forward-looking statements involve risks, uncertainties and other factors that may cause actual results, performance or achievements to be materially different from those contemplated by the forward-looking statements. This document does not constitute an offer to sell or solicitation of an offer to buy any securities.

Certain Tax Information: ASA is a "passive foreign investment company" for United States federal income tax purposes. As a result, United States shareholders holding shares in taxable accounts are encouraged to consult their tax advisors regarding the tax consequences of their investment in the Company's common shares.



Gold and Precious Metals Limited

February 29, 2024

Website www.asaltd.com
Toll-free (800)432-3378

On April 12, 2019, shareholders approved Merk Investments LLC (“Merk”) as advisor to ASA. As a firm, Merk brings a long history of portfolio management of registered investment companies, and research that includes primary research on central banks and their impact on the price of gold. Portfolio Manager Peter Maletis joined Merk after 8 years at Franklin Templeton, where he was precious metals analyst. He spent much of his time at Franklin meeting with the management of gold companies from around the world as well as on due diligence site visits, where he developed an intimate understanding of the many companies in the precious metals sector. It is with that background that Peter is influencing changes to the ASA portfolio, also leveraging on the resources made available by Merk.

Primary Commodity	% of NAV
Gold	75.5%
Diversified Miners	20.2%
Silver	2.5%
Net Liquid Assets	1.5%
Platinum & Palladium	0.4%
Type	% of NAV
Mining Companies	56.4%
Exploration Companies	29.2%
Development Companies	12.9%
Net Liquid Assets	1.5%
Royalty Companies	0.0%
Stage of Development	% of NAV
Exploration Companies	29.2%
Production < 500k ounces	28.4%
Production 500k - 1mm ounces	16.3%
Development Companies	12.9%
Production >1mm ounces	11.7%
Net Liquid Assets	1.5%
Royalty Companies	0.0%
Country of Incorporation	% of NAV
Canada	71.1%
Australia	18.9%
South Africa	4.5%
Cayman Islands	3.8%
Net Liquid Assets	1.5%
United States	0.2%
Type of Security	% of NAV
Equity Securities	97.0%
Net Liquid Assets	1.5%
Convertible	0.9%
Warrants	0.6%
Capitalization	% of NAV
Market Cap < \$2bn	77.2%
Market Cap \$2bn - \$10bn	13.2%
Market Cap >\$10bn	8.2%
Net Liquid Assets	1.5%

Holdings	Ticker	% of NAV
G Mining Ventures Inc	GMIN CN	10.2%
Emerald Resources	EMR AU	8.7%
Aya Gold & Silver Inc	AYA CN	6.7%
Orla Mining Ltd	OLA CN	6.5%
Calibre Mining Corp	CXBSR CN	5.1%
Prime Mining Corp	PRYM CN	4.1%
Predictive Discovery	PDI AU	3.8%
Alamos Gold Inc	AGI	3.8%
Endeavour Mining	EDV CT	3.8%
Karora Resources	KRR CN	3.6%
Barrick Gold Corp	GOLD	3.1%
Agnico Eagle Mines Ltd	AEM	2.6%
Gold Fields Ltd-Adr	GFI	2.5%
Probe Gold Inc	PRB CN	2.1%
Perseus Mining Ltd	PRU AU	2.0%
San Cristobal Mining	PRIVATE	2.0%
Atex Resources Inc	ATX CN	1.8%
Anglogold Ashant - Adr	ANG SJ	1.6%
B2Gold Corp	BTO CT	1.5%
Net Cash Or Equivalent	Cash	1.5%
Thesis Gold Inc	TAU CN	1.2%
Arizona Metals Corp	AMC CN	1.0%
Discovery Silver Corp	DSV CN	1.0%
Delta Lithium Ltd	DLI AU	1.0%
Mawson Gold Ltd	MAW CN	0.9%
I-80 Gold Corp 8% Cvt	I80 CN	0.9%
Integra Resources Corp	ITR CN	0.9%
Skeena Resources Ltd	SKE CN	0.8%
Bellevue Gold Ltd	BGL AU	0.8%
Red Pine Exploration Inc	RPX CN	0.8%
O3 Mining Inc	OIII CN	0.7%
Liberty Gold Corp-Plc	LGD CN	0.7%
Lotus Gold Corp	PRIVATE	0.7%
Gogold Resources Inc	GGD CN	0.7%
Lithium Africa Resources Corp	PRIVATE	0.6%
Firefly Metals	FFM AU	0.6%
G2 Goldfields Inc	GTWO	0.5%
Silver Tiger Metals	SLVR CN	0.5%
Barton Gold Holdings	BGD AU	0.5%
Bunker Hill Mining Corp	BNKR CN	0.4%
Genesis Minerals Ltd	GMDAU	0.4%
Stlir Gold Inc	STLR CN	0.4%
Sibanye Stillwater- Adr	SSW SJ	0.4%
Bendito Resources Inc	PRIVATE	0.3%
Andean Precious Metals	APM CN	0.3%

Holdings	Ticker	% of NAV
Adventus Mining Corp	ADZN CN	0.3%
Tdg Gold Corp	TDG CN	0.3%
Emerita Resources	EMOT CN	0.3%
Sable Resources Ltd	SAE CN	0.3%
Alicanto Minerals Ltd	AQI AU	0.3%
Westhaven Gold Corp	WHN CN	0.3%
Cygnus Gold Ltd	CY5 AU	0.3%
Pan Global Resources	PGZ CN	0.2%
Prime Mining Wmt	PRYM CN	0.2%
Castile Resources	CST AU	0.2%
Desert Gold Ventures Inc	DAU CN	0.2%
G Mining Ventures Wmt	GMIN CN	0.2%
Perpetua Resources Corp	PPTA	0.2%
Roscan Gold Corp	ROS CN	0.2%
Newcore Gold Ltd	NCAU CN	0.2%
Max Resource Corp	MAX CN	0.2%
Silver Mountain Resources Inc	AGMR CN	0.2%
Lahontan Gold Corp	LAHO CN	0.2%
Americas Gold & Silver Corp	USA	0.2%
Talisker Resources Ltd	TSK CN	0.2%
Highgold Mining Inc	HIGH CN	0.2%
American Pacific Mining	USGD CN	0.2%
Angel Wing Metals Inc	AWM CN	0.1%
Atacama Copper Corp	ACOP CN	0.1%
Geopacific Resources Ltd	GPR AU	0.1%
Bellavista Resources	BVRZZ AU	0.1%
Lcl Resources Ltd	LCL CN	0.1%
Prodigy Gold NI	PRX AU	0.1%
Delta Lithium Ltd Wmt	DLI AU	0.1%
Atex Resources Inc Wmt	ATX CN	0.0%
Onyx Gold Corp	ONYX CN	0.0%
Pan American Silver Cvt	PAAS	0.0%
Calibre Mining Corp Wmt	CXBSR CN	0.0%
Lotus Gold Corp Wmt	PRIVATE	0.0%
Huntsman Exploration	HMAN CN	0.0%
Red Pine Exploration Inc Wmt	RPX CN	0.0%
Monarch Mining Corp	GBAR CN	0.0%
Bunker Hill Mining Corp Wmt	BNKR	0.0%
Lahontan Gold Corp Wmt	LAHO CN	0.0%
Integra Resources Corp Wmt	ITR CN	0.0%
Angel Wing Metals Inc Wmt	AWM CN	0.0%
Monarch Mining Corp Wmt	GBAR CN	0.0%
Desert Gold Ventures Inc Wmt	DAU CN	0.0%
Thesis Gold Inc Wmt	TAU CN	0.0%
Stlir Gold Corp Wmt	STLR CN	0.0%
Gold Mountain Mining Wmt	GMTN CN	0.0%

Warrants and Convertible Securities (annotated as Wmt and Cvt, respectively) may not be publicly traded; ticker symbols referenced may refer to issuer of the respective Warrant or Convertible Security. References to 0.0% of NAV are non-zero amounts rounded to 0.0%. Please see other side for additional important disclosure.