



## Gold and Precious Metals Limited

December 31, 2023

### Shares

Ticker	ASA
Net assets	\$340 million
NAV	\$17.61
Share price	\$15.06
Discount	14.48%

### Management

Adviser	Merk Investments
Portfolio Managers	Peter Maletis James Holman
CIO	Axel Merk

### Contact

ASA Gold & Precious Metals Limited  
c/o Apex Fund Services  
3 Canal Plaza, Suite 600  
Portland, Maine 04101  
Website [www.asaltd.com](http://www.asaltd.com)  
Toll-free (800)432-3378

### Dividends

Distributions	Semi-annual
11/22/23	\$.01
05/18/23	\$.01
11/23/22	\$.01
05/19/22	\$.01

### Statistics

Beta <sup>1</sup>	0.89
R-squared <sup>2</sup>	0.77

<sup>1</sup> Source: Bloomberg. Beta measures the Company's market-related risk over a three-year period relative to its benchmark, the NYSE Arca Gold Miners Total Return Index. A beta lower than 1 indicates historically lower volatility than the index; greater than 1 indicates higher volatility.

<sup>2</sup> Source: Bloomberg. R-squared is a measure of the percentage of a company's share price movement that can be attributed to its benchmark index. It can range from 0 and 1; 1 indicates a perfect correlation.

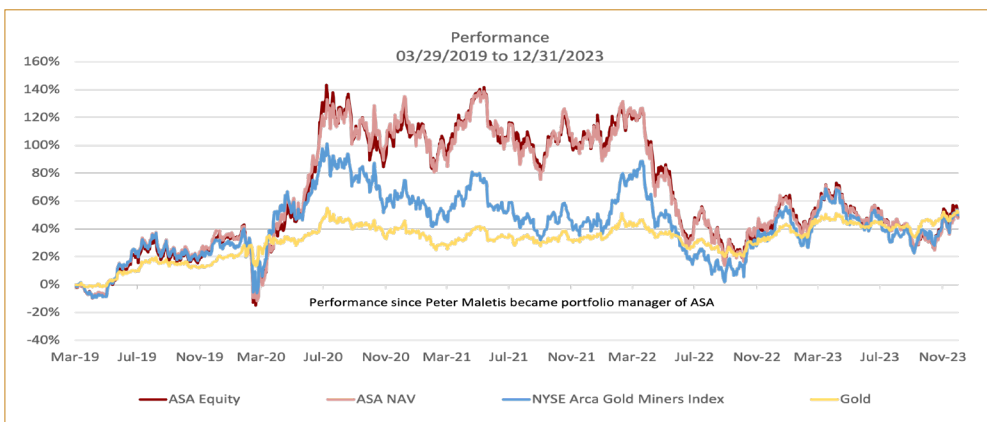
Established in 1958, ASA Gold and Precious Metals Limited is a closed-end precious metals and mining fund (NYSE: ASA) registered with the United States Securities and Exchange Commission and domiciled in Bermuda. The Company is one of the oldest investment management firms focused on the precious metals and mining industry. ASA employs bottom-up fundamental analysis and relies on detailed primary research including meetings with company executives, site visits to key operating assets, and proprietary financial analysis in making its investment decisions.

### PERFORMANCE AS OF DECEMBER 31, 2023

Average Annual Total Returns

	1 Year	3 Years	5 Years	10 Years	15 Years	Inception
NAV	1.9%	-12.9%	9.5%	3.6%	0.1%	7.8%
Share Price	5.4%	-11.6%	9.9%	2.3%	-0.2%	7.6%

Includes the reinvestment of dividends. Inception is from December 11, 1958, the date on which the Company's shares were listed for trading on the NYSE.



All performance information reflects past performance and is presented on a total return basis. Past performance is no guarantee of future results. Current performance may differ from that shown. The Company concentrates in the gold and precious minerals sector. This sector may be more volatile than other industries and may be affected by movements in commodity prices triggered by international monetary and political developments. The Company is a non-diversified fund and, as such, may invest in fewer investments. ASA Gold and Precious Metals Limited may invest in smaller-sized companies that may be more volatile and less liquid than larger, more-established companies. Investments in foreign securities, especially those in the emerging markets, may involve increased risk as well as exposure to currency fluctuations. Shares of closed-end funds frequently trade at a discount. This document may contain statements regarding plans and expectations for the future that constitute forward-looking statements within the Private Securities Litigation Reform Act of 1995. By their nature, forward-looking statements involve risks, uncertainties and other factors that may cause actual results, performance or achievements to be materially different from those contemplated by the forward-looking statements. This document does not constitute an offer to sell or solicitation of an offer to buy any securities.

Certain Tax Information: ASA is a "passive foreign investment company" for United States federal income tax purposes. As a result, United States shareholders holding shares in taxable accounts are encouraged to consult their tax advisors regarding the tax consequences of their investment in the Company's common shares.



## Gold and Precious Metals Limited

December 31, 2023

Website [www.asaltd.com](http://www.asaltd.com)  
Toll-free (800)432-3378

On April 12, 2019, shareholders approved Merk Investments LLC (“Merk”) as advisor to ASA. As a firm, Merk brings a long history of portfolio management of registered investment companies, and research that includes primary research on central banks and their impact on the price of gold. Portfolio Manager Peter Maletis joined Merk after 8 years at Franklin Templeton, where he was precious metals analyst. He spent much of his time at Franklin meeting with the management of gold companies from around the world as well as on due diligence site visits, where he developed an intimate understanding of the many companies in the precious metals sector. It is with that background that Peter is influencing changes to the ASA portfolio, also leveraging on the resources made available by Merk.

Primary Commodity	% of NAV
Gold	76.1%
Diversified Miners	17.9%
Silver	2.9%
Net Liquid Assets	2.6%
Platinum & Palladium	0.4%
Type	% of NAV
Mining Companies	57.2%
Exploration Companies	28.8%
Development Companies	11.4%
Net Liquid Assets	2.6%
Royalty Companies	0.0%
Stage of Development	% of NAV
Exploration Companies	28.8%
Production < 500k ounces	24.5%
Production 500k - 1mm ounces	20.2%
Production >1mm ounces	12.5%
Development Companies	11.4%
Net Liquid Assets	2.6%
Royalty Companies	0.0%
Country of Incorporation	% of NAV
Canada	67.5%
Australia	20.5%
Cayman Islands	4.6%
South Africa	4.5%
Net Liquid Assets	2.6%
United States	0.2%
Type of Security	% of NAV
Equity Securities	96.1%
Net Liquid Assets	2.6%
Convertible	0.9%
Warrants	0.4%
Capitalization	% of NAV
Market Cap < \$2bn	71.7%
Market Cap \$2bn - \$10bn	17.0%
Market Cap >\$10bn	8.7%
Net Liquid Assets	2.6%

Holdings	Ticker	% of NAV
Emerald Resources	EMR AU	9.0%
G Mining Ventures Inc	GMIN CN	7.3%
Aya Gold & Silver Inc	AYA CN	6.2%
Orla Mining Ltd	OLA CN	5.9%
Endeavour Mining	EDV CT	4.6%
Predictive Discovery	PDI AU	4.0%
Alamos Gold Inc	AGI	4.0%
Barrick Gold Corp	GOLD	3.5%
Calibre Mining Corp	CXBSR CN	3.0%
Karora Resources	KRR CN	2.8%
Agnico Eagle Mines Ltd	AEM	2.7%
Net Cash Or Equivalent	Cash	2.6%
Gold Fields Ltd-Adr	GFI	2.6%
Prime Mining Corp	PRYM CN	2.5%
SSR Mining Inc	SSRM	2.5%
Probe Gold Inc	PRB CN	2.1%
Perseus Mining Ltd	PRU AU	2.0%
B2Gold Corp	BTO CT	1.9%
San Cristobal Mining	PRIVATE	1.8%
Thesis Gold Inc	TAU CN	1.7%
Anglogold Ashant - Adr	ANG SJ	1.5%
Delta Lithium Ltd	DLI AU	1.4%
Arizona Metals Corp	AMC CN	1.4%
Integra Resources Corp	ITR CN	1.2%
Discovery Silver Corp	DSV CN	1.2%
Marathon Gold Corp	MOZ CN	1.2%
Skeena Resources Ltd	SKE CN	1.0%
I-80 Gold Corp 8% Cvt	I80 CN	0.9%
Liberty Gold Corp-Plc	LGD CN	0.9%
Gogold Resources Inc	GGD CN	0.9%
Mawson Gold Ltd	MAW CN	0.8%
Bellevue Gold Ltd	BGL AU	0.8%
Red Pine Exploration Inc	RPX CN	0.8%
O3 Mining Inc	OIII CN	0.8%
Auteco Minerals Ltd	AUT AU	0.8%
Lotus Gold Corp	PRIVATE	0.7%
Atex Resources Inc	ATX CN	0.6%
Silver Tiger Metals	SLVR CN	0.6%
Cygnus Gold Ltd	CY5 AU	0.5%
Tdg Gold Corp	TDG CN	0.5%
Barton Gold Holdings	BGD AU	0.5%
G2 Goldfields Inc	GTWO	0.5%
Bunker Hill Mining Corp	BNKR CN	0.5%
Sibanye Stillwater- Adr	SSW SJ	0.4%
Genesis Minerals Ltd	GMDAU	0.4%
Nighthawk Gold Corp	NHK CN	0.4%
Emerita Resources	EMOT CN	0.4%

Holdings	Ticker	% of NAV
Alicanto Minerals Ltd	AQI AU	0.3%
Pan Global Resources	PGZ CN	0.3%
Bendito Resources Inc	PRIVATE	0.3%
Adventus Mining Corp	ADZN CN	0.3%
Sable Resources Ltd	SAE CN	0.3%
Roscan Gold Corp	ROS CN	0.3%
Westhaven Gold Corp	WHN CN	0.3%
Andean Precious Metals	APM CN	0.3%
Castile Resources	CST AU	0.2%
Highgold Mining Inc	HIGH CN	0.2%
Silver Mountain Resources Inc	AGMR CN	0.2%
Max Resource Corp	MAX CN	0.2%
Perpetua Resources Corp	PPTA	0.2%
Lahontan Gold Corp	LAHO CN	0.2%
Americas Gold & Silver Corp	USA	0.2%
Talisker Resources Ltd	TSK CN	0.2%
Newcore Gold Ltd	NCAU CN	0.2%
American Pacific Mining	USGD CN	0.2%
Angel Wing Metals Inc	AWM CN	0.1%
Prodigy Gold NI	PRX AU	0.1%
Delta Lithium Ltd Wmt	DLI AU	0.1%
Desert Gold Ventures Inc	DAU CN	0.1%
Lcl Resources Ltd	LCL CN	0.1%
Geopacific Resources Ltd	GPR AU	0.1%
Atacama Copper Corp	ACOP CN	0.1%
Prime Mining Wmt	PRYM CN	0.1%
Bellavista Resources	BVRZZ AU	0.1%
G Mining Ventures Wmt	GMIN CN	0.1%
Onyx Gold Corp	ONYX CN	0.0%
Pan American Silver Cvt	PAAS	0.0%
Marathon Gold Corp Wmt	MOZ CN	0.0%
Lotus Gold Corp Wmt	PRIVATE	0.0%
Atex Resources Inc Wmt	ATX CN	0.0%
Integra Resources Corp Wmt	ITR CN	0.0%
Red Pine Exploration Inc Wmt	RPX CN	0.0%
Monarch Mining Corp	GBAR CN	0.0%
Bunker Hill Mining Corp Wmt	BNKR	0.0%
Silver Mountain Resources Inc Wmt	AGMR CN	0.0%
Lahontan Gold Corp Wmt	LAHO CN	0.0%
Angel Wing Metals Inc Wmt	AWM CN	0.0%
Gold Mountain Mining Wmt	GMTN CN	0.0%
Monarch Mining Corp Wmt	GBAR CN	0.0%
Thesis Gold Inc Wmt	TAU CN	0.0%
Desert Gold Ventures Inc Wmt	DAU CN	0.0%
Nighthawk Gold Corp Wmt	NHK CN	0.0%
Emerita Resources Wmt	EMOT CN	0.0%

Warrants and Convertible Securities (annotated as Wmt and Cvt, respectively) may not be publicly traded; ticker symbols referenced may refer to issuer of the respective Warrant or Convertible Security. References to 0.0% of NAV are non-zero amounts rounded to 0.0%. Please see other side for additional important disclosure.